



CAVALLIERA

Welcome yourself to the difference...

SS18

MADE IN EU

## INTRODUCTION

---

Sophisticated. Unique. Feminine. These three words summarize the essence of Cavalliera.

Cavalliera is the perfect choice for the sensitive and smart women riders to whom uniqueness and expression are greatly important. Women, who believe in harmony: harmony between rider and horse, harmony in appearance and harmony in life. These values shine through all Cavalliera designs and inspire women worldwide, as they inspire us.

The 2018 Spring-Summer Collection infuses a hint of 1920's decadent Paris into crisp and sleek modern lines, resulting in excitingly unique designs. Pearly white and velvety black give the basic tones and create harmony, while navy blue and deep cherry provide elegant accents to the outfits.

For every garment, the Cavalliera team pays maximum attention to fabric selection, fitting and perfect quality. We are present in over 40 countries and offer our elegant designs through selected wholesalers and retail shops that share our standard of high quality and brand essence.



## INNOVATION

---

### THE DOUBLE FRONT PANEL SHOW JACKET

**Year of Innovation:** 2015

**Seasons:** 7th season

By combining style and functionality Cavalliera have taken equestrian fashion to the next level, any rider can look elegant and be comfortable at the same time.

**Double front panel:** The double panels give free range of motion below the fitted waistline, even if you need extreme freedom of movement during the exercises.

**Fitted waistline:** Enables the rider's motions without having the waistline creased. The material follows the body movement flawlessly.

**Perfect shape:** Perfectly designed form fitted jacket, which is an alternative choice for ladies with sizes above M as well.





## INNOVATION

---

### THE SECOND SKIN SOFTSHELL SHOW JACKET

**Year of Innovation:** 2016

**Seasons:** 4th season

The name says it all really.

**Innovative Design:** Cavalliera's fashion designers responsible for the Second Skin jacket, that look like it's living together with the rider's body. The special, body-fitted design skims your curves like a second skin, to follows body movements to the maximum extent.

**Science:** Cavalliera's design concepts strives to show the connection between the body and fabric. The Secons Skin Jacket moves together with the rider's body. It is fitted from wrist to waist, manufactured from a light and super stretchy technical fabric to enable maximal range of motion and limitless comfort.

**Support technology:** Cavalliera products were created to be more than just clothing, they are meant to be key elements of your success.



## INNOVATION

---

### THE SECOND SKIN SOFTSHELL TAIL COAT

Year of Innovation: 2018

Seasons: 1st season

Innovative Design: The special, body-fitted design skims your curves like a second skin, to follow body movements to the maximum extent. Designed with a super slim and flexible fit a curved waist for a more flattering look.

Six panels technology on the back: Ensures maximum freedom of movement and flexibility.

Fitted waistline on the back: Provides comfort, functionality and exceptional style at the same time.

Interchangeable flaps: Allow the rider to change the colour of her flaps to full silver and navy blue or black with silver design on the edges.



## INNOVATION

---

### SHOW SHIRTS MADE FROM LACE FABRIC

**Year of Innovation:** 2013

**Seasons:** 7th season

Cavalliera as a pioneer launched its lace shirt model on the market in 2013. During the past 6 years Cavalliera was unstoppable as a prominent fashion ruler with its unique models on the market.

This year Cavalliera's designers want to move away from the traditional lace pattern.



## INNOVATION

---

### THE PURITY SHOW JACKET

**Year of Innovation:** 2016

**Seasons:** 4th season

Cavalliera is renowned for its cutting-edge modernization that uses new technologies paired with traditional techniques.

**8 panels technology on the back:** Maximum freedom of movement and flexibility.

**Fitted waistline on the back:** Provides comfort, functionality and exceptional style at the same time.

**Reinforced elbow sewing:** Supports the rider's special movement.





# FABRICS FEATURES



## TECHNICAL FABRICS Developed specifically for active wear.

### Softshell Premium



**SEASONAL THERMAL TREATMENT:** the fabric keeps your body warm in the winter and cool in the summertime.



**PROTECTION:** moderately wind, water and UV resistant.



**EASY CARE:** light weight softshell fabric that is easy to care for.



**STRETCHY COMFORT:** maximal freedom to move with your horse.

### Softshell SC



**LIGHT WEIGHT:** breathable, made with a moisture management fabric.



**PROTECTION:** moderately wind, water and UV resistant.



**EASY CARE:** light weight softshell fabric that is easy to care for.



**MAXI-STRETCH:** to follow body movements to the maximum extent.

### CoolPass



**DRY BODY:** the microfine yarns allow moisture to escape from the body.



**100% BREATHABLE:** the microfiber thread provides moisture-oxygen management.



**DRY CLOTHING:** the microfine yarns create a capillary action to channel sweat or water away.



**NO TRACES OF PERSPIRATION:** water droplets are transported immediately to the air by microfiber, no traces on the surface.



**SEASONAL THERMAL TREATMENT:** the fabric keeps your body warm in the winter and cool in the summertime.

### CoolR



**DRY BODY:** the microfine yarns allow moisture to escape from the body.



**DRY CLOTHING:** the microfine yarns create a capillary action to channel sweat or water away.



**SILKY SOFT:** Silk Touch 2-way stretch fabric.



**CLIMATE CONTROL:** tiny and uniquely designed light polyamide with special checked pattern for air flow.

### CoolP



**NO WRINKLES:** durable, wrinkle-resistant fabric.



**LIGHTWEIGHT:** breathable, made with a moisture management fabric.



**QUICK DRY:** quick-drying fabric keeps you dry and comfortable while riding.



**SUMMER WEAR:** perfect for the hottest days with our CoolP microfiber, it will cool you down as well as protect you from solar rays.



**STRETCHY COMFORT:** Stretchable Spandex® for comfort, you're free to move with your horse.



## COTTON BASED FABRICS

**Pique:** A staple fabric in the sportswear industry, pique has long been regarded as the go-to fabric for polo shirts. 'Pi-kay' refers to the weaving style characterized by the raised parallel cords. Mainly woven of cotton, pique has proven to be breathable, durable and easily cared for as its textured weave does not show perspiration stains readily. This fabric gives excellent comfort.



**Stretch Cotton:** This material shows good durability, utility and high water-absorbing capacity. In humid atmosphere it can absorb 27% of water without getting damp, has very good breathable characteristics, it is hypoallergenic, feels great to touch, suits perfectly for people with skin hypersensitivity. It has low thermal-conductivity, therefore it is an ideal material for summer clothes, it prevents you from heat. It has very high elasticity characteristics, easily washable and can be ironed even at high temperature.



**Two-Way:** This fabric can be stretched into two directions. It is best used in clothing where you need an elastic waist and free range of motion. The material is soft because of the cotton base, therefore the texture is comfortable and breathable as well.



**Stretch Cord:** Soft and velvet touch fabric with maximal flexibility. Durable and long-lasting fabric for show jacket. The multi-way elastic system provides coverage in the saddle. Easy care.



**Viscose Poly Jersey:** This type of cotton-like viscose is really soft and light, it feels good to wear, because the material is breathable and nice to touch. Thanks to the spandex the fabric is flexible, and it keeps its shape after several washings.





## SHOW APPAREL



● black/grey



## DOUBLE FRONT PANEL - PRIME TECHNICAL

made of special double front technology that ensures free range of motion below the fitted waistline, even if you need extreme freedom of movement. Decorated with contrasted piping on the belt imitation and front panels. Features three matt matching buttons.

Size XXS, XS, S, M, L, XL, XXL

Fabric  Softshell Premium: 41% PA 35% PES 15% EA 9% PU

Colour ● navy blue/grey ● black/grey  
● bordeaux/grey ● grey/bordeaux

● navy blue/grey



CAVALLIERA  
PROFESSIONAL

## INNOVATION



SEASONAL THERMAL  
TREATMENT



PROTECTION



EASY CARE



STRETCHY COMFORT

**181-301411**  
**Softshell Show Jacket**

grey/bordeaux



bordeaux/grey



CAVALLIERA  
PROFESSIONAL

## INNOVATION



SEASONAL THERMAL  
TREATMENT



PROTECTION



EASY CARE



STRETCHY COMFORT



white/grey/navy blue




**181-301412**  
**Short Sleeve Show Shirt**

## PRIME TECHNICAL

made by using innovative sun-shirt technology: a combination of technical fabrics like CoolP and breathable CoolPass Mesh. Designed with contrasted color piping and mesh inserts.

Size XS, S, M, L, XL, XXL

Fabric  CoolP: 74% PES, 22% NY, 4% SP

Colour  white/grey/navy blue  
white/grey/black  
white/grey/bordeaux

white/grey/bordeaux



**181-301413**  
**Long Sleeve Show Shirt**



CAVALLIERA  
PROFESSIONAL



NO WRINKLES



LIGHT WEIGHT



QUICK DRY



SUMMER WEAR



STRETCHY COMFORT



white/grey/black



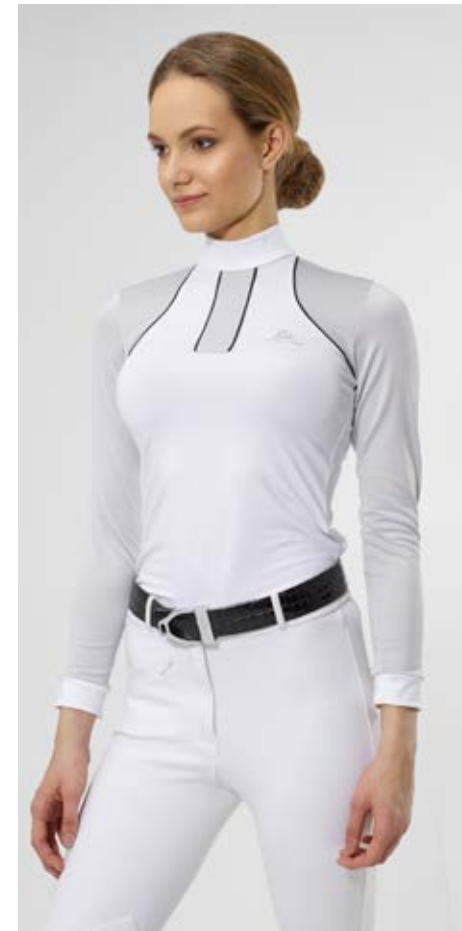
white/grey/black



white/grey/bordeaux



white/grey/navy blue



NO WRINKLES



LIGHT WEIGHT



QUICK DRY



SUMMER WEAR



STRETCHY COMFORT



● black



## MISS PURITY

designed with a feminine cut and unique pleated bottom, made out of 8 different sections on the back for the perfect slim fit effect. Decorated with silver piping along the collar, on the pockets and belt imitation on the back as well as fine crystals. Features four silver buttons.

Size 4/5y, 6/7y, 8/9y, 10/11y, 12/13y, XXS, XS, S, M, L, XL, XXL

Fabric Two-Way: 62% CO 33% VI 5% SP

Colour ● navy blue ● black



CAVALLIERA  
PROFESSIONAL

## INNOVATION



COTTON BASED



NATURAL AIR  
PERMEABILITY



ELASTIC

**181-302401**  
**Show Jacket**

INNOVATION



COTTON BASED



NATURAL AIR  
PERMEABILITY



ELASTIC

● navy blue



● black







CAVALLIERA  
PROFESSIONAL

## INNOVATION



SILKY SOFT



CLIMATE CONTROL



DRY BODY



100% BREATHABLE



QUICK DRY



NO TRACES  
OF PERSPIRATION



SEASONAL THERMAL  
TREATMENT

☐ white




**181-302412**  
**Short Sleeve Show Shirt**

## MISS PURITY TECHNICAL

made of our own-developed technical CoolR fabric. Decorated with fine crystals on the collar.

Size 4/5y, 6/7y, 8/9y, 10/11y, 12/13y,  
XS, S, M, L, XL, XXL

Fabric  CoolR: 87% PES 13% EA,  
CoolPass: 100% CoolPass

Colour ☐ white

(It is durable, wrinkle-resistant, lightweight, breathable, and non-absorbent, which means that moisture from your skin evaporates instead of being drawn into the material. It also repels UV rays and insulates you even when it's wet.)

☐ white



**181-302413**  
**Long Sleeve Show Shirt**

☐ white



**181-302414**  
**Sleeveless Show Shirt**



● navy blue




**181-303411**  
**Softshell Show Jacket**

## SECOND SKIN - SILVERY TECHNICAL

made of technical softshell fabric, designed with a super slim and flexible fit offering best-in-class performance. Decorated with shiny silver-grey design on the sleeves, shoulders and collars. Features four fine crystallized buttons.

Size 10/11y, 12/13y,  
XXS, XS, S, M, L

Fabric  Softshell 41% PA 35% PES  
15% EA 9% PU

Colour ● navy blue ● black

● black



CAVALLIERA  
PROFESSIONAL

### INNOVATION



LIGHT WEIGHT



PROTECTION



EASY CARE



MAXI-STRETCH

## INNOVATION



LIGHT WEIGHT



PROTECTION



EASY CARE



MAXI-STRETCH

● black





● black




**181-303412**  
**Short Sleeve Show Shirt**

## SILVERY TECHNICAL

made of our high performance technical CoolP fabric for the maximum enjoyment of the sport. Be sporty and love your stylish look at the same time! Decorated with shiny silver-grey design on the neck and sleeves, crystal button.

Size 10/11y, 12/13y,  
XS, S, M, L

Fabric  CoolP: 74% PES, 22% NY, 4% SP

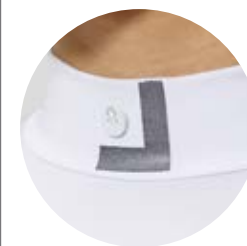
Colour ○ white ● black

(It is durable, wrinkle-resistant, lightweight, breathable, and non-absorbent, which means that moisture from your skin evaporates instead of being drawn into the material. It also repels UV rays and insulates you even when it's wet.)

○ white



**181-303413**  
**Long Sleeve Show Shirt**



NO WRINKLES



LIGHT WEIGHT



QUICK DRY



SUMMER WEAR



STRETCHY COMFORT

○ white



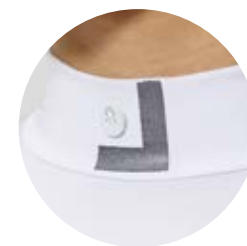
● black



○ white



CAVALLIERA  
PROFESSIONAL



NO WRINKLES



LIGHT WEIGHT



QUICK DRY



SUMMER WEAR



STRETCHY COMFORT





● navy blue



## SECOND SKIN - SILVERY TECHNICAL ☼

made of premium technical softshell fabric. Designed with a super slim and flexible fit and curved waist for a more flattering look. The faux leather lining also ensures a tailored finish. Decorated with shiny silver-grey design on the back and collars as well as fine crystallized buttons. Interchangeable flaps with colors of full silver and navy blue or black with silver design on the edges can be attached to the coat through two attachment-points.

Size 10/11y, 12/13y,  
XXS, XS, S, M, L

Fabric ☼ Softshell Premium: 41% PA 35%  
PES 15% EA 9% PU

Colour ● navy blue ● black

● black



CAVALLIERA  
PROFESSIONAL

## INNOVATION



SEASONAL THERMAL  
TREATMENT



PROTECTION



EASY CARE



STRETCHY COMFORT

**181-303811**  
**Softshell Tail Coat**



## INNOVATION



SEASONAL THERMAL  
TREATMENT



PROTECTION

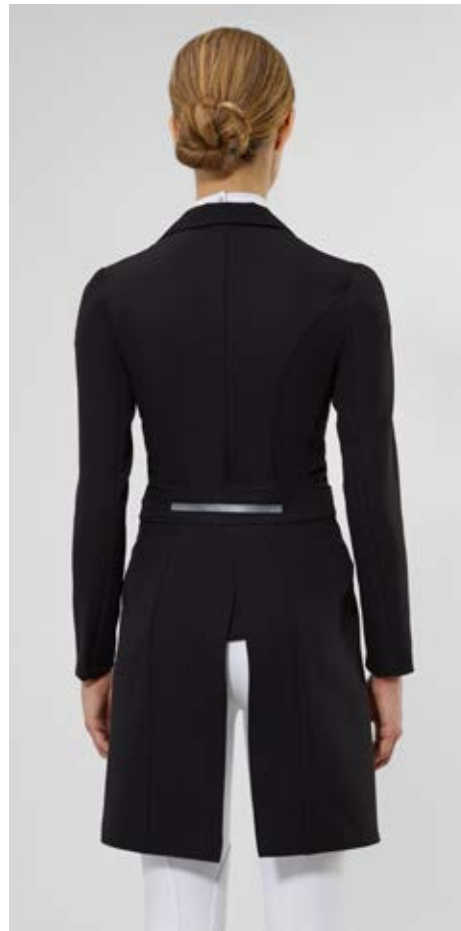


EASY CARE



STRETCHY COMFORT

● black





● navy blue



## MADEMOISELLE TECHNICAL

made out of 8 different sections for the perfect slim fit effect. Designed with silver piping on the pockets and on the back. Decorated with silver geo-abstract tartan motif on the sleeves. Features four silver stripe buttons.

Size 4/5y, 6/7y, 8/9y, 10/11y, 12/13y,  
XXS, XS, S, M, L, XL, XXL

Fabric  Softshell Premium: 41% PA 35% PES  
15% EA 9% PU

Colour ● navy blue ● black

● black



CAVALLIERA  
PROFESSIONAL



SEASONAL THERMAL  
TREATMENT



PROTECTION



EASY CARE



STRETCHY COMFORT

**181-304411**  
**Softshell Show Jacket**

● black



CAVALLIERA  
PROFESSIONAL



SEASONAL THERMAL  
TREATMENT



PROTECTION



EASY CARE



STRETCHY COMFORT



● black/white




**181-304412**  
**Short Sleeve Show Shirt**

## MADEMOISELLE TECHNICAL

made of our high performance technical CoolP fabric. Designed with contrasted colors to provide a tailored and professional look. Decorated with silver piping on the front.

Size 4/5y, 6/7y, 8/9y, 10/11y, 12/13y,  
XS, S, M, L, XL, XXL

Fabric  CoolP: 74% PES, 22% NY, 4% SP

Colour ● black/white

(It is durable, wrinkle-resistant, lightweight, breathable, and non-absorbent, which means that moisture from your skin evaporates instead of being drawn into the material. It also repels UV rays and insulates you even when it's wet.)

● black/white



**181-304413**  
**Long Sleeve Show Shirt**



CAVALLIERA  
PROFESSIONAL



NO WRINKLES



LIGHT WEIGHT



QUICK DRY

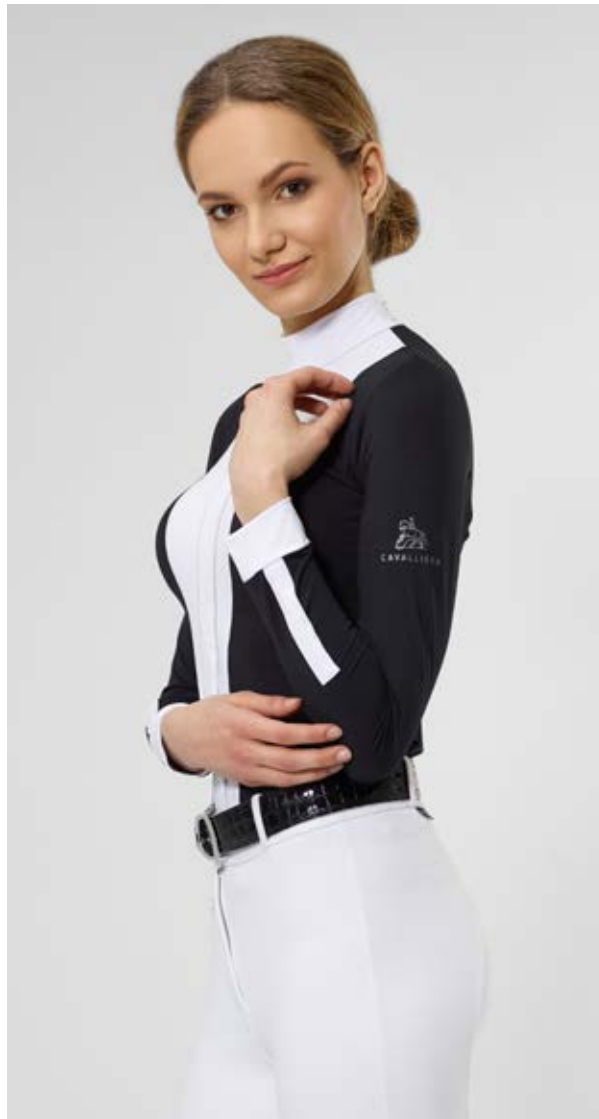


SUMMER WEAR



STRETCHY COMFORT

● black/white



● black/white



CAVALLIERA  
PROFESSIONAL



NO WRINKLES



LIGHT WEIGHT



QUICK DRY

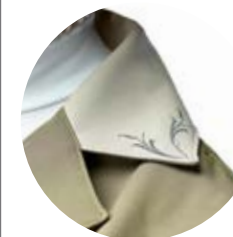


SUMMER WEAR



STRETCHY COMFORT





SEASONAL THERMAL  
TREATMENT



PROTECTION



EASY CARE




STRETCHY COMFORT

## HUNTER TECHNICAL

made of premium softshell fabric with sophisticated, but perfectly fitting cut. A re-thought classic! Designed with fine silver pattern on the left collar. Features four unique matt buttons.

Size XXS, XS, S, M, L, XL, XXL

Fabric  Softshell Premium: 41% PA  
35% PES 15% EA 9% PU

Colour  khaki/sand



**181-305411**  
**Softshell Show Jacket**







CAVALLIERA  
PROFESSIONAL



COTTON BASED



NATURAL AIR  
PERMEABILITY



ELASTIC

## OCEAN BLUE

made of premium stretch cord fabric. First-class tailored fit with superior stretch allows this premium show coat to move with the body. The color and the fabric create a show-stopping style that will have all eyes on the rider. Features four silver buttons.

Size XXS, XS, S, M, L, XL, XXL

Fabric Stretch Cord: 85% PES 12% PA 3%SP

Colour ● petrol blue



**181-306401**  
**Cord Show Jacket**



NO WRINKLES



LIGHT WEIGHT



QUICK DRY



SUMMER WEAR



STRETCHY COMFORT


☐ white



## PRINCESS TECHNICAL

made of our high performance technical CoolP fabric. Designed with wavy, silvery neckline and sleeves, which gives the top of this sophisticated shirt a sharp finish.

Size 4/5y, 6/7y, 8/9y, 10/11y, 12/13y,  
XS, S, M, L, XL, XXL

Fabric  CoolP: 74% PES, 22% NY,  
4% SP

Colour ☐ white

(It is durable, wrinkle-resistant, lightweight, breathable, and non-absorbent, which means that moisture from your skin evaporates instead of being drawn into the material. It also repels UV rays and insulates you even when it's wet.)

☐ white



**181-307414**  
**Sleeveless Show Shirt**

**181-307412**  
**Short Sleeve Show Shirt**



## INNOVATION



NO WRINKLES



LIGHT WEIGHT



QUICK DRY



SUMMER WEAR




STRETCHY COMFORT

● black

### CONTESSA TECHNICAL

made of our high performance technical CoolP fabric combined with sophisticated raglan style striped lace sleeves. Extremely feminine, lightweight and soft, the modern update of show shirts.

Size XS, S, M, L, XL, XXL

Fabric  CoolP: 74% PES, 22% NY, 4% SP & Lace: 100% PES

Colour ● black



**181-308412**  
**Short Sleeve Show Shirt**

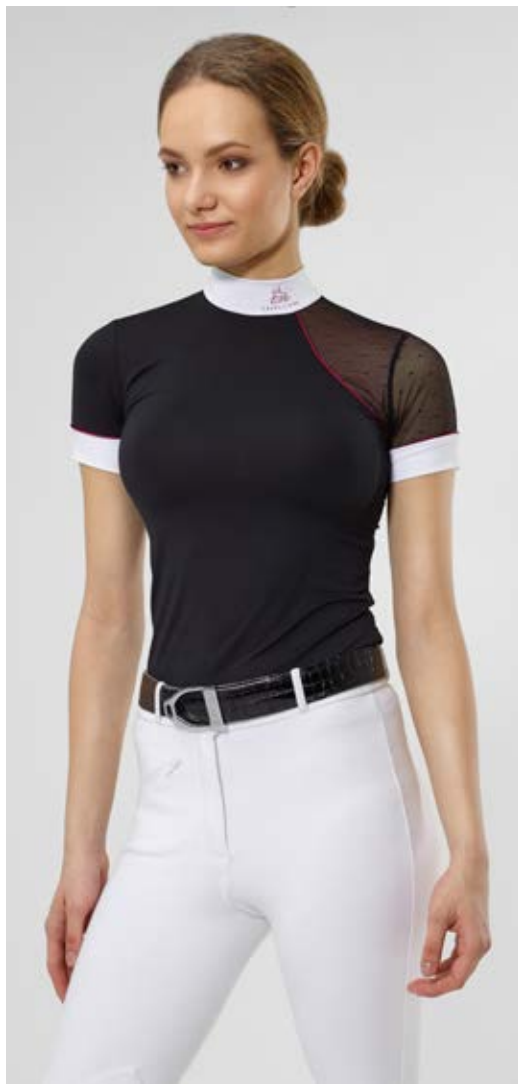
● black



**181-308413**  
**Long Sleeve Show Shirt**




● black/bordeaux






## DAME TECHNICAL

made of our high performance technical CoolP fabric combined with one-sided raglan style dotted lace sleeve, that instantly elevates any equestrian look. The contrasted piping is the perfect final touch on this shirt, which is an equestrian wardrobe essential.

Size XS, S, M, L, XL, XXL

Fabric  CoolP: 74% PES, 22% NY, 4% SP  
& Lace: 100% PES

Colour  white/bordeaux  
 white/navy blue  
 black/bordeaux

(It is durable, wrinkle-resistant, lightweight, breathable, and non-absorbent, which means that moisture from your skin evaporates instead of being drawn into the material. It also repels UV rays and insulates you even when it's wet.)

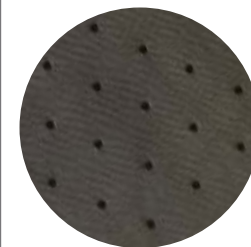
**181-309412**  
**Short Sleeve Show Shirt**

● white/navy blue



**181-309413**  
**Long Sleeve Show Shirt**

## INNOVATION



NO WRINKLES



LIGHT WEIGHT



QUICK DRY

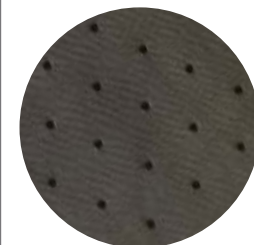


SUMMER WEAR



STRETCHY COMFORT

## INNOVATION



NO WRINKLES



LIGHT WEIGHT



QUICK DRY



SUMMER WEAR

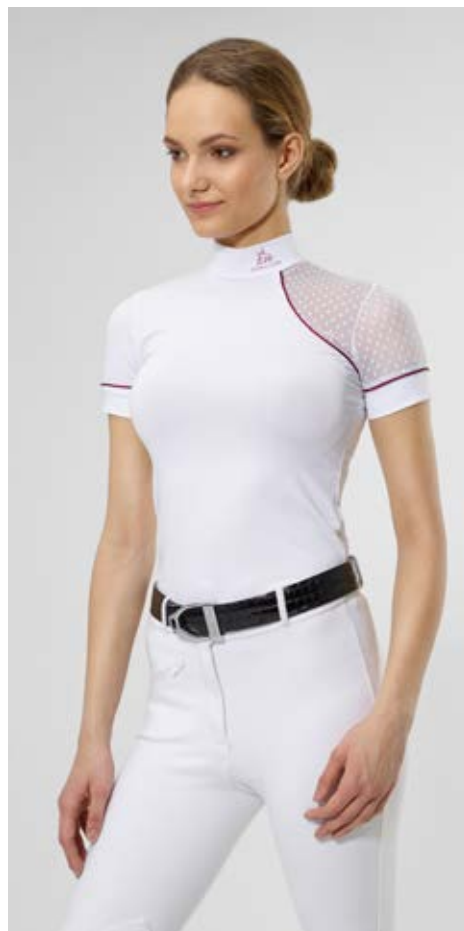


STRETCHY COMFORT

 white/navy blue



 white/bordeaux



 black/bordeaux



 white/bordeaux




● grey



## TRIANGLE TECHNICAL

made of CoolPass technology, that keeps your body cool in the summer. Developed specially for active wear, designed with elegant silver triangle pattern on the front.

Size 4/5y, 6/7y, 8/9y, 10/11y, 12/13y, XS, S, M, L, XL, XXL

Fabric  CoolPass: 100% CoolPass

Colour ● navy blue ● grey

(It is durable, wrinkle-resistant, lightweight, breathable, and non-absorbent, which means that moisture from your skin evaporates instead of being drawn into the material. It also repels UV rays and insulates you even when it's wet.)

● navy blue



DRY BODY



100% BREATHABLE



QUICK DRY



NO TRACES  
OF PERSPIRATION



SEASONAL THERMAL  
TREATMENT

**181-310412**  
**Short Sleeve Show Shirt**

**181-310413**  
**Long Sleeve Show Shirt**

● navy blue



● grey



● navy blue



CAVALLIERA  
PROFESSIONAL



DRY BODY



100% BREATHABLE



QUICK DRY

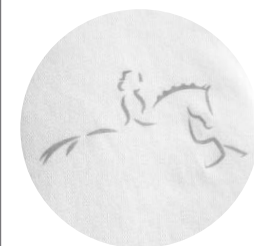


NO TRACES  
OF PERSPIRATION



SEASONAL THERMAL  
TREATMENT





COTTON BASED



NATURAL AIR  
PERMEABILITY



ELASTIC

☐ white (dressage)



**181-311412**  
**Short Sleeve Show Shirt**

## HIGH CLASS PIQUÉ

made of popular piqué fabric for a sporty and at the same time elegant feel. 1/2 zip design provides a classic competition style and maximum comfort and freedom after the show. Designed with silver piping and dressage or show jumping motif on the chest.

Size XS, S, M, L, XL, XXL

Fabric Piqué: 95% CO 5% SP

Colour ☐ white (dressage)  
☐ white (show jumping)

☐ white (show jumping)



**181-311413**  
**Long Sleeve Show Shirt**

☐ white (dressage)



**181-311414**  
**Sleeveless Show Shirt**

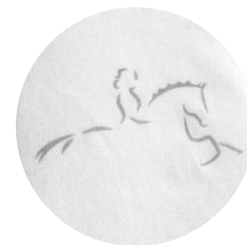
☐ white (show jumping)



☐ white (dressage)



☐ white (show jumping)



COTTON BASED



NATURAL AIR  
PERMEABILITY



ELASTIC

CASUAL

---



● navy blue (show jumping)



## HIGH CLASS PIQUÉ

made of piqué fabric. A classic polo shirt offering timeless style and sporty feel. The silver dressage or show jumping motif and design on the collar make it a truly special riding wear.

Size XS, S, M, L, XL

Fabric Piqué: 95% CO 5% SP

Colour ● navy blue (dressage)  
● navy blue (show jumping)

● navy blue (dressage)



**181-101107**  
**Polo Shirt**



CAVALLIERA



COTTON BASED



NATURAL AIR  
PERMEABILITY



ELASTIC




● black (show jumping)



## HIGH CLASS TECHNICAL

made of CoolPass Technology, that was developed specially for active wear. The microfine yarns allow moisture to escape from the body and keep the body dry and cool in the summer. Designed with silver dressage or show jumping motif on the chest.

Size XS, S, M, L, XL, XXL

Fabric  CoolPass: 100% CoolPass

Colour ● navy blue (dressage)  
● navy blue (show jumping)  
● black (dressage)  
● black (show jumping)

**181-101111**  
**Short Sleeve Top**

● navy blue (dressage)



**181-101112**  
**Long Sleeve Top**



DRY BODY



100% BREATHABLE



QUICK DRY



NO TRACES  
OF PERSPIRATION



SEASONAL THERMAL  
TREATMENT

● black (dressage)



● navy blue (dressage)



● navy blue (show jumping)



● black (dressage)



● black (show jumping)



● navy blue (show jumping)



DRY BODY



100% BREATHABLE



QUICK DRY



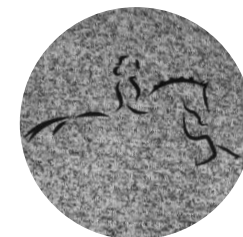
NO TRACES  
OF PERSPIRATION



SEASONAL THERMAL  
TREATMENT



CAVALLIERA



COTTON BASED



NATURAL AIR  
PERMEABILITY



ELASTIC

● grey melange (dressage)



## HIGH CLASS

made of light and soft poly jersey fabric. This feminine lightweight, classic v-neck sweater is a perfect transitional piece for any season. Designed with silver dressage or show jumping motif on the chest.

Size XS, S, M, L, XL, XXL

Fabric Poly Jersey: 80% VI 16% PES 4% SP

Colour ● navy blue (dressage)  
● navy blue (show jumping)  
● grey melange (dressage)  
● grey melange (show jumping)

● navy blue (show jumping)



**181-101203**  
**Sweater**

● navy blue (dressage)



● grey melange (show jumping)



COTTON BASED



NATURAL AIR  
PERMEABILITY



ELASTIC



● black (dressage)



## HIGH CLASS TECHNICAL

made out of different fabrics and CoolPass technology. This stylish and feminine sport jacket with front zip and mesh inserts is perfect for training, developed specially for active wear. Professional combination of style, flattering fit and function for the equestrian lifestyle, anytime. Designed with silver dressage or show jumping motif on the chest.

Size XS, S, M, L, XL, XXL

Fabric  Suede Bonding Viscose: 58% PES 40% VI 2% SP & CoolPass Mesh: 100% CoolPass

Colour ● black (dressage)  
● black (show jumping)

● black (show jumping)



COTTON BASED



NATURAL AIR PERMEABILITY

**181-101711**  
**CoolPass Coat**

● black (dressage)



● black (show jumping)



CAVALLIERA



COTTON BASED



NATURAL AIR  
PERMEABILITY

● black (dressage)



## HIGH CLASS

a sport chic cap with a rounded crown and stiff beak. Decorated with silver dressage or show jumping motif.

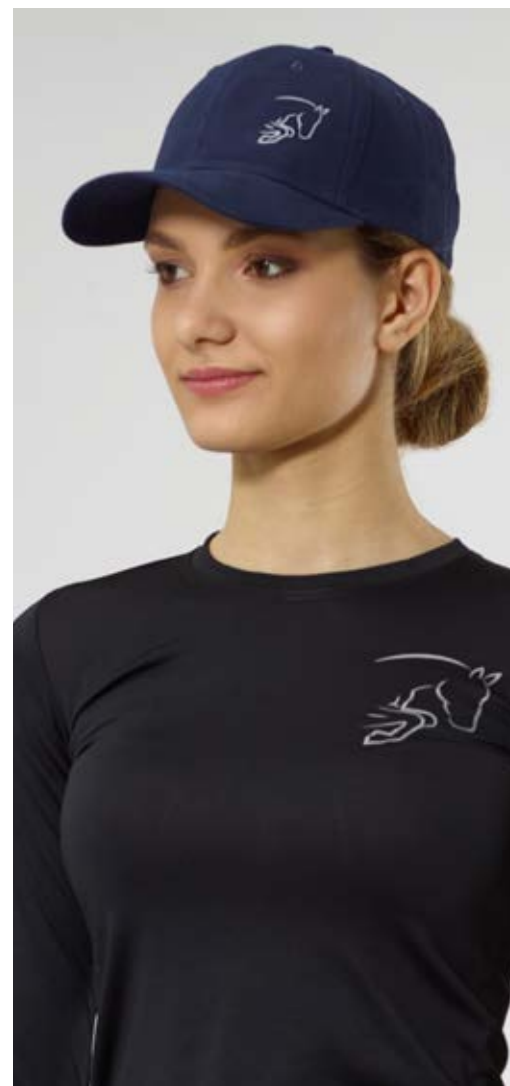
Size uni

Fabric Cotton: 100% CO

Colour

- navy blue (dressage)
- navy blue (show jumping)
- black (dressage)
- black (show jumping)
- white (dressage)
- white (show jumping)

● navy blue (show jumping)



**181-101501**  
**Baseball Cap**



CAVALLIERA



COTTON BASED



NATURAL AIR  
PERMEABILITY



● navy blue (dressage)



● black (show jumping)



○ white (dressage)



○ white (show jumping)





● black



## LOU LOU

made of the combination of two different fabrics, illuminating a beautiful and feminine style. This lightweight T-Shirt features dotted lace sleeves. Timeless style for all equestrian women.

Size XS, S, M, L, XL, XXL

Fabric Stretch Cotton: 95% CO 5% SP & Lace: 100% PES

Colour ● black

**181-102101**  
**Short Sleeve Top**

● black

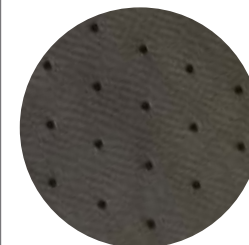


**181-102102**  
**Long Sleeve Top**



CAVALLIERA

## INNOVATION



COTTON BASED



NATURAL AIR  
PERMEABILITY



ELASTIC



CAVALLIERA



COTTON BASED



NATURAL AIR  
PERMEABILITY



ELASTIC

● navy blue



## CRYSTAL BITS

highly breathable cotton performance treatment offers lightweight comfort while, in addition, the sophisticated crystal decoration provides elegance for the rider.

Size XS, S, M, L, XL, XXL

Fabric Stretch Cotton: 95% CO 5% SP

Colour ● navy blue ● black  
● grey melange ● red

● red



**181-103101**  
**Short Sleeve Top**

● black



● grey melange



CAVALLIERA



COTTON BASED



NATURAL AIR  
PERMEABILITY



ELASTIC

● black



## BLACK BEAUTY

classic style for trainings or everyday use. The natural cotton fabric provides lightweight comfort for the rider. Decorated with a spectacular yet discreet black horse crystal pattern.

Size XS, S, M, L, XL, XXL

Fabric Stretch Cotton: 95% CO 5% SP

Colour ● black

**181-104101**  
**Short Sleeve Top**

● black



**181-104102**  
**Long Sleeve Top**



CAVALLIERA



COTTON BASED



NATURAL AIR  
PERMEABILITY



ELASTIC






● black/gold



## FINE GOLD TECHNICAL

Cavalliera's technical fabric-based vest features wind and water-resistant front panel and contrasting color satin inserts. Slimming cut creates a feminine silhouette, and the gold color satin inserts accent this vest perfectly. Ideal for protecting you from the elements when riding and providing maximum freedom of movement. Two-way zipper on the front. Make your look complete with Fine Gold saddle pad, Fine Gold ear bonnets and Fine Gold bandage.

Size XS, S, M, L, XL, XXL

Fabric  Suede Bonding Viscose: 58% PES 40% VI 2% SP & CoolP: 74% PES, 22% NY, 4% SP

Colour ● black/gold



NO WRINKLES



LIGHT WEIGHT



QUICK DRY



SEASONAL THERMAL TREATMENT



STRETCHY COMFORT

**181-105712**  
**Vest**

● navy blue/gold



## FINE GOLD TECHNICAL

Cavalliera dressage or show jumping saddle pad for horses, made from premium softshell material and cotton bottom layer. Decorated with elegant gold color satin inserts that give this saddle pad a unique look. Beyond traditional equestrian equipment, it's a style that expresses you. Make your look complete with Fine Gold vest, Fine Gold ear bonnets and Fine Gold bandage.

● black/gold



**181-105611**  
**Show Jumping Saddle Pad**

● navy blue/gold




● black/gold



**181-105611**  
**Dressage Saddle Pad**

Size full DR, full SJ

Fabric  Softshell Premium: 41% PA 35% PES 15% EA 9% PU & Cotton: 100% CO & Satin: 100% PES

Colour ● black/gold ● navyblue/gold







CAVALLIERA



COTTON BASED



NATURAL AIR  
PERMEABILITY



ELASTIC

● black/gold



## FINE GOLD

**181-105602**

### Bandage

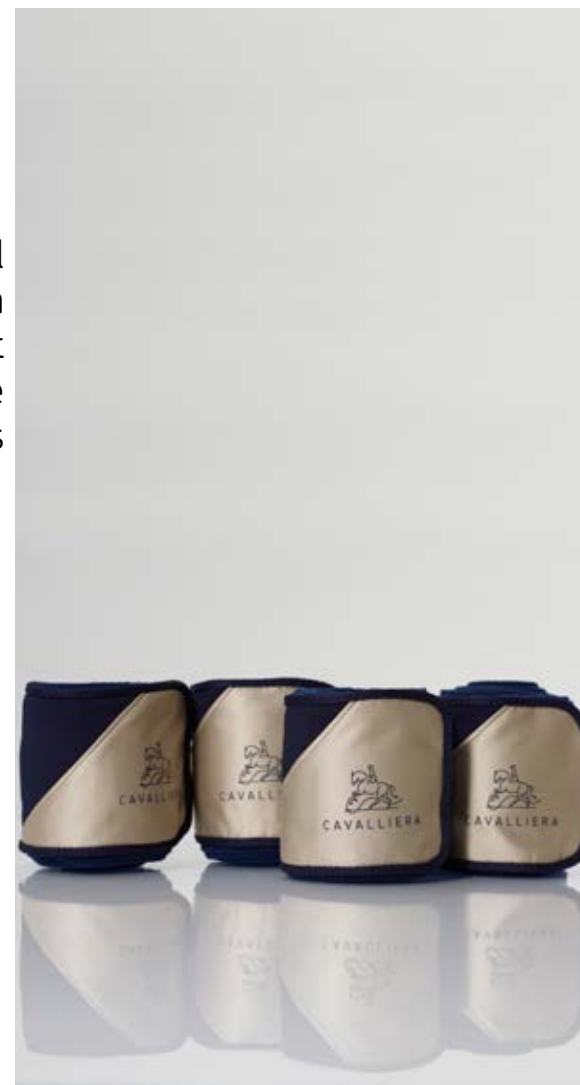
Cavalliera bandage for horses, decorated with elegant, diagonal cut gold color satin inserts, that make the four pieces set unforgettable. Make your look complete with Fine Gold vest, Fine Fold ear bonnets and Fine Gold saddle pad.

Size full

Fabric Fleece: 100% microPES & Softshell  
Premium: 41% PA 35% PES 15% EA 9% PU  
& Satin: 100% PES

Colour ● black/gold ● navy blue/gold

● navy blue/gold



**181-105602**  
**Bandage**



● black/gold




**181-105613**  
**Short Version Ear Bonnets**

## FINE GOLD TECHNICAL

made from a combination of technical fabrics and CoolPass technology. The microfiber threads provide oxygen-flow management for the ears. Decorated with elegant, diagonal cut gold color satin insert. A perfect piece of our horse equipment collection: Fine Gold ear bonnets, Fine Gold vest, Fine Gold saddle pad and Fine Gold bandage.

Size cob, full

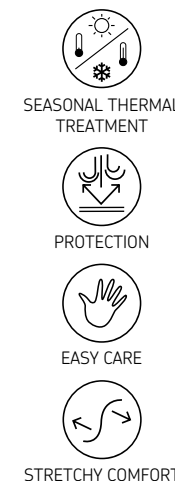
Fabric  Softshell Premium: 41% PA 35% PES 15% EA 9% PU & CoolPass: 100% CoolPass & Satin: 100% PES

Colour ● black/gold ● navyblue/gold

● black/gold



**181-105614**  
**Long Version Ear Bonnets**



navy blue/gold



navy blue/gold



CAVALLIERA



SEASONAL THERMAL  
TREATMENT



PROTECTION



EASY CARE



STRETCHY COMFORT



KIDS



● navy blue



## LITTLE JUMPER

made of wrinkle-free cotton based fabric. This extremely elastic T-Shirt provides maximum comfort for the smallest riders. Decorated with girlish pink horse motif.

Size 4/5y, 6/7y, 8/9y, 10/11y, 12/13y

Fabric Stretch Cotton: 95% CO 5% SP

Colour ● navy blue ● grey melange

**181-201101**  
**Short Sleeve Top**

● grey melange



**181-201102**  
**Long Sleeve Top**



● grey melange



● navy blue



CAVALLIERA  
KIDS



COTTON BASED



NATURAL AIR  
PERMEABILITY



ELASTIC


 navy blue/pink



## LITTLE JUMPER TECHNICAL

made from light technical softshell fabric. This girlish lightweight, frilly vest is a perfect transitional piece for any season. Decorated with pink jumping horse motif.

Size 4/5y, 6/7y, 8/9y, 10/11y, 12/13y

Fabric  Softshell SC: 41% PA 35% PES 15% EA 9% PU

Colour  navy blue/pink



LIGHT WEIGHT



PROTECTION



EASY CARE



MAXI-STRETCH

**181-201712**  
**Softshell Vest**



CAVALLIERA  
KIDS



COTTON BASED



NATURAL AIR  
PERMEABILITY

● navy blue

## LITTLE JUMPER

a sport chic cap with a rounded crown and stiff beak. Decorated with pink jumping horse motif.

Size uni

Fabric Cotton: 100% CO

Colour ● navy blue ● black  
○ white

● navy blue

○ white



**181-201501**  
**Baseball Cap**

● red



## LUNA

made of cotton based fabric for a maximum comfort while riding. The T-Shirt features a beautiful silver color horse motif on front, which makes a little rider the most stylish rider in the stable.

Size 4/5y, 6/7y, 8/9y, 10/11y, 12/13y

Fabric Stretch Cotton: 95% CO 5% SP

Colour ● navy blue ● pink ● red

**181-202101**  
**Short Sleeve Top**

● pink



**181-202102**  
**Long Sleeve Top**



CAVALLIERA  
KIDS



COTTON BASED



NATURAL AIR  
PERMEABILITY



ELASTIC





COTTON BASED



NATURAL AIR  
PERMEABILITY



ELASTIC

navy blue



pink



navy blue



red



● navy blue



## FRILLY BEAUTY

made of wrinkle-free cotton based fabric. The ruffles and the bow on the back make this loose fit shirt really special, ideal for real horse rider princesses. Decorated with silver color horse head motif on the front.

Size 4/5y, 6/7y, 8/9y, 10/11y, 12/13y

Fabric Stretch Cotton: 95% CO 5% SP

Colour ● navy blue ● pink

● pink



**181-203103**  
**Short Sleeve Loose Fit Top**

**181-203106**  
**Long Sleeve Loose Fit Top**

● pink



● navy blue



● navy blue



● pink



● navy blue



**181-204101**  
**Short Sleeve Top**

## LOVELY PONY ROSE

made of elastic cotton based fabric for a comfortable wear. Decorated with rose color pony strass pattern on front. Stylish look for the horse fan, an essential piece of a little rider.

Size 4/5y, 6/7y, 8/9y, 10/11y, 12/13y

Fabric Stretch Cotton: 95% CO 5% SP

Colour ● navy blue ● grey melange ● rose

● rose



**181-204102**  
**Long Sleeve Top**





CAVALLIERA  
KIDS



COTTON BASED



NATURAL AIR  
PERMEABILITY



ELASTIC

● rose



● grey melange



● grey melange



● navy blue



## SIZING INFORMATION FOR TOPS

### SLIM FIT

SIZE	CHEST		WAIST		HIPS		ARM LENGTH (long sleeve)		SHIRTS LENGTH (back)	
	CM	INCH	CM	INCH	CM	INCH	CM	INCH	CM	INCH
4 - 5 y	62	24,5	58	23	58	23	39	15,5	38	15
6 - 7 y	66	26	64	25	64	25	41	16	44	17
8 - 9 y	74	29	71	28	74	29	43	17	47	18,5
10 - 11 y	76	30	73	29	80	31,5	45	18	49	19,5
12 - 13 y	81	32	77	30	85	33,5	49	19	52	20,5
XS	74	29	70	27,5	82	32	56,5	22	55	22
S	76	30	72	28,5	84	33	58	22,5	56	22,5
M	78	30,5	76	30	88	34,5	59	23	57	22,5
L	82	32	78	31	88	35	59	23	58	23
XL	92	36	86	34	102	40	62	24,5	59	23,5
XXL	102	40	98	38,5	114	45	62	24,5	65	25,5



### LOOSE FIT

SIZE	CHEST		WAIST		HIPS		ARM LENGTH (long sleeve)		SHIRTS LENGTH (back)	
	CM	INCH	CM	INCH	CM	INCH	CM	INCH	CM	INCH
4 - 5 y	62	24	56	22	68	26,5	37	14,5	36	14
6 - 7 y	66	26	64	25	80	31	41	16	45	17,5
8 - 9 y	74	29	76	29,5	90	35	45	17,5	49	19
10 - 11 y	76	29,5	82	32	96	37	47	18	50	19,5
12 - 13 y	81	31,5	86	33,5	100	39	49	19	51	20
XS	74	29	82	32	98	38	59	23	67	26
S	76	29,5	84	33	100	39	59	23	67	26
M	78	30,5	88	34	104	40,5	60	23,5	68	26,5
L	82	32	94	36,5	108	42	61	24	69	27
XL	92	36	102	40	114	44,5	62	24	70	27,5
XXL	102	40	110	43	120	47	63	24,5	71	28

## SIZING INFORMATION FOR SHOW JACKETS

### REGULAR

SIZE	CHEST		WAIST		HIPS		ARM LENGTH (long sleeve)		JACKET LENGTH (back)	
	CM	INCH	CM	INCH	CM	INCH	CM	INCH	CM	INCH
4 - 5 y	56	22	55	22	60	24	40	16	42	16,5
6 - 7 y	58	23	57	22	62	24	43	17	45	18
8 - 9 y	65	26	59	23	70	28	47	18,5	50	20
10 - 11 y	73	29	63	25	78	31	52	20,5	55	22
12 - 13 y	80	31	70	28	82	32	56	22	57	22
XXS	80	31,5	66	26	80	31	60	24	59	23
XS	84	33	70	28	84	33	61	24	59	23
S	88	35	74	29	88	35	62	24	61	24
M	92	36	80	31,5	92	36	63	25	62	24
L	98	39	88	35	98	39	65	26	65	26
XL	106	42	98	39	106	42	66	26	65	26
XXL	118	46	106	42	120	47	67,5	27	66	26



### SECOND SKIN

SIZE	CHEST		WAIST		HIPS		ARM LENGTH (long sleeve)		JACKET LENGTH (back)	
	CM	INCH	CM	INCH	CM	INCH	CM	INCH	CM	INCH
10 - 11 y	60	24	52	20	70	28	51	20	54	21
12 - 13 y	68	27	56	22	74	29	56	22	57	22
XXS	70	27,5	60	24	78	31	60	24	58	23
XS	74	29	64	25	82	32	60	24	58	23
S	78	31	68	27	86	34	60	24	58	23
M	82	32	74	29	90	35	62	24	60	24
L	88	35	78	31	96	38	65	26	60	24



CAVALLIERA



cavalliera.com



+36 70 531 9009



info@cavalliera.com



facebook.com/cavalliera



@cavalliera\_international