

SPRING/SUMMER 2020

Additional catalogue to our CLASSICS collection



CAVALLIERA



SEASONAL COLLECTION SPRING/SUMMER 2020

CLASSICS & SEASONAL

While our CAVALLIERA CLASSICS Collection is still available, we are proud to present our SEASONAL collection for Spring/Summer 2020. To check out our CLASSICS Catalogue please visit cavalliera.com.

ABOUT CAVALLIERA

Cavalliera is a global leader in the design of stylish competition grade equestrian apparel, offering the best design/quality/price ratio riding wear on the market. Cavalliera is permanently developing the show apparels with its revolutionary innovations as 'Second Skin' and 'Double Front Panel' show jackets, lace show shirts, and is defining the future of equestrian style with its constantly evolving fine detailed clothes. Cavalliera revolutionises the online customer service with its retailer account system. The Team supports its partners with a cutting-edge automation and a truly personal attention.

PRODUCT CATEGORIES

Show jackets, show shirts, breeches, leggings, riding tops, coats, vests, sweaters, accessories, horse equipment.



HIGHLIGHTS

Explore Cavalliera's sophisticated world of innovative design, feminine cut and extraordinary fabrics. The use of lace goes back a long way in Cavalliera's history. This collection presents a variety of lace: black and white; used to decorate show shirts, casual tops, and breeches as well. This season's accent color is dusty green. Discover a 'collection within the collection' with this glamorous color.

SHOW JACKETS

ZIP CHIC

Sleek Show Jacket created in stretch jersey fabric with a zip structure. Cut to a short-length blazer, this jacket is styled for minimalist appeal with a zip closure and pockets. The Second Skin Technology provides an unrestricted movement in the saddle.





MODERN CLASS

Fitted show jacket with geometric cuts and buttoned cuffs crafted in a Softshell fabric that is giving a sport luxe feeling and athletic functionality. Designed in a collarless style for minimalist silhouette. This modern jacket fastens with an elegant satin finish hardware detail to maintain a clear look.

TAILCOAT

MODERN CLASS

This modern, 'Second Skin' but classic style tailcoat is tailored to a close fit. Designed in a collarless style with satin finish and buttoned cuffs for minimalist silhouette. The tailcoat is crafted in a premium Softshell fabric with added stretch for easy movement that allows full freedom of comfortable movement.





TIARA

Unique, beautifully crafted design plastron with crystal decoration on the front and around the neck. It has a soft silk feel while made with 100% dusef. Perfect to personalize yourself when you have to dress up to in competition wear.

STOCK TIE

SHOW SHIRTS

Show season is upon us, and it pays off to have an elegant outfit that works for any occasion, for everyday training or competitions. Discover a range of innovative solutions in our seasonal offering of show shirts:

UNIVERSE and DUSTY GREEN:
with standing V-neck in two mesmerizing colors: black/white microstriped and dusty green

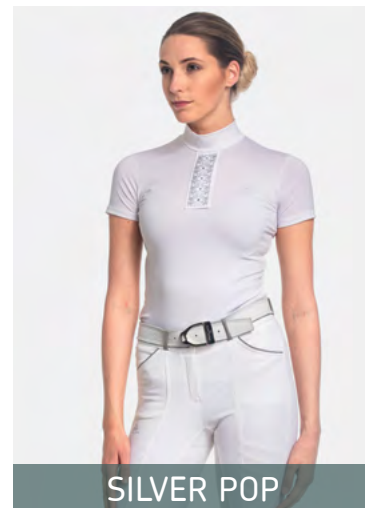
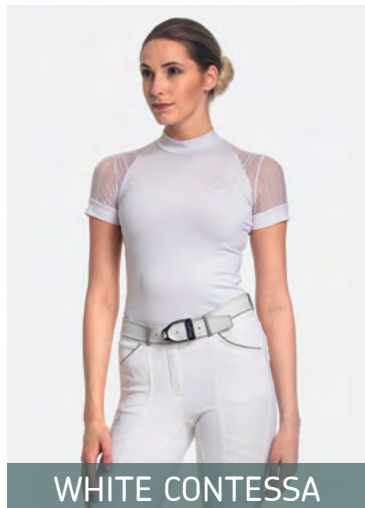
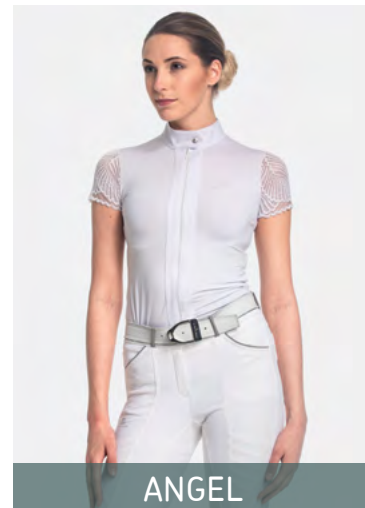
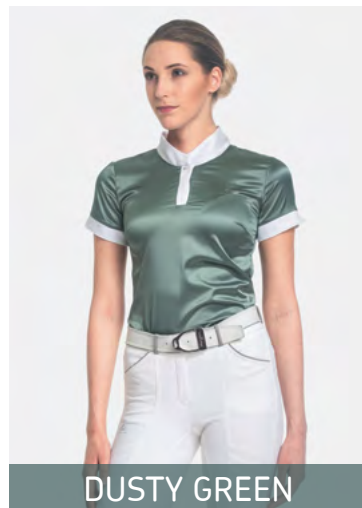
ANGEL and WHITE CONTESSA:
two different types of lace sleeves

FESTIVE:
a very subtle, gathered neckline blouse

SILVER POP:
a classic shirt with crystal and silver details

UNIVERSE







ANGEL

This show shirt is designed in a lacesleeve style and front zip. Crafted in technical CoolP and silk soft lace fabrics for functionality and softness against the skin. This show top is a unique competition style that was developed for both, elegance and active wear.





CONTESSA and WHITE CONTESSA

Made of a high performance lightweight technical fabric combined with sophisticated raglan-style striped lace sleeves. Extremely feminine but comfortable, the modern update of show shirts, and a fusion of eye-catching design and functionality. Black version is available in our CLASSICS Collection.



FESTIVE

This luxurious show shirt in stretch technical CoolR fabric is styled simply with elegant detailing at the scoop neckline. The regular-fit design and the elasticity guarantee day-long comfort with maximal freedom of movement. In short-sleeve and sleeveless version.



SILVER POP

A great choice of show shirts with classic lines and thoughtful details. Made of breathable performance fabric that create a lightweight and flattering show shirt that is designed to be high-performing. This top has a front closure with crystal and silver details.



DUSTY GREEN





CASUALS







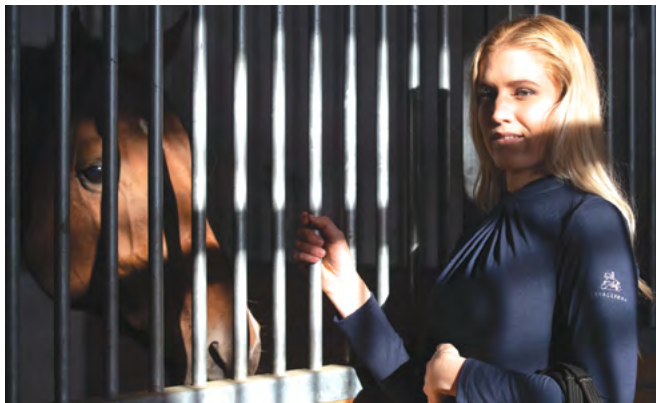
ANGEL

This top provides all day comfort and style with its lace-sleeve style and front zip. This top is highly functional while training without compromising style, developed for active wear. Crafted in technical CoolP and silk soft lace fabrics for functionality and softness against the skin.



CASUAL CHIC

This elegant top offers refined styling with a premium finish. Made from a soft, cotton based fabric with a touch of stretch, the fluid shape is given structure through a gathered neckline. A feminine option for training.



RAINY

Water-repellent hooded raincoat is perfect for horseback riding in any weather. The pleated back construction adds interest in look and place for the saddle to keep it saved from the rain, while the twoway zip offers styling versatility and comfort in the saddle.





ROSE GOLD HOODIE

Hooded terry sweatshirt with rose gold foil artwork. This hoodie is crafted in cotton-blend terry for cosy softness, and it features a beautiful horse print on the front. Designed with a wide-neck drawstring hood and ribbing at the hem and cuffs. The kangaroo pocket adds more functionality to this sweater.



ROSE GOLD T-SHIRT

Cotton jersey T-shirt is designed with a rose gold lustrous foil artwork for a touch of luxe. Made of soft cotton jersey fabric, cut to a loose-fit for casual style. A daytime glamour to casual looks in the riding club.

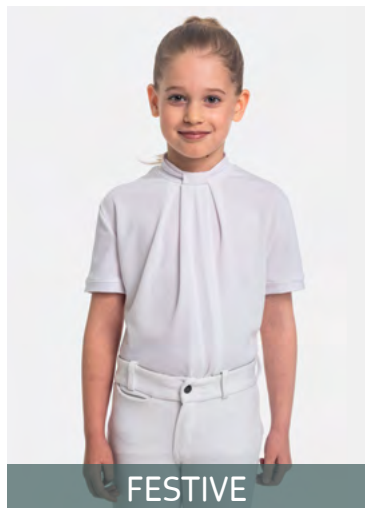
FOR MEN



JAX MEN



A slim-fit jacket created in stretch faux-leather fabric with a soft and supple feel with mesh technology in fabric for a better texture breathability that provides a dry environment for the rider. This masculine design is detailed with a front zip and cotton based inserts. This jacket gives you maximal freedom of movement while you ride.



FESTIVE



UNIVERSE



ROSE GOLD



ROSE GOLD



RAINY



JAX

FOR KIDS

BREECHES



ROYAL SPORT LACE 'J' & ROYAL RIDE 'J'

Our breeches are designed for competition and for active everyday needs with performance lightwear fabrics and Meryl Fiber Technology. Featuring grip technology: the silicone print on the knee provides a secure grip in the saddle and more consistent leg position, and an additional silicone grip on the elasticated waistband gives fixed hold on the waist even under extreme movement during exercises. A stretch lycra sock on the bottom of each leg what allows boots to slip on with ease.



ROYAL SPORT
LACE 'J'



ROYAL RIDE
'J'



ROYAL RIDE
'J'

LEGGINGS



ROYAL PLEASURE II

This cotton based ultimate full grip leggings are a fully functional, ultra-comfortable and unquestionably stylish. 4-way natural stretch fabric gives the ultimate riding experience even for everyday needs of sensitive skin riders. These leggings are designed with faux-leather inserts and special belt loops. The silicone print on the seat provides a secure grip in the saddle. The functional pockets are comfortably fit for phones or small belongings.



ROYAL PLEASURE II



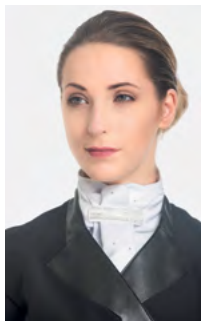
120-101110
ZIP CHIC
 Show Jacket
 XS, S, M, L
 black, navy blue, bordeaux



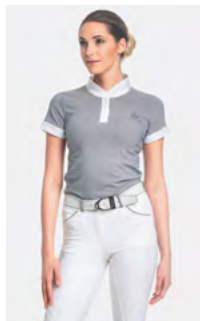
120-102110
MODERN CLASS
 Show Jacket
 XS, S, M, L, XL
 black



120-102120
MODERN CLASS
 Dressage Tailcoat
 XS, S, M, L
 black, navy blue



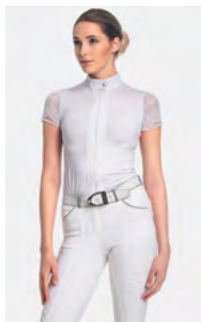
120-109150
TIARA
 Stock Tie
 uni
 white



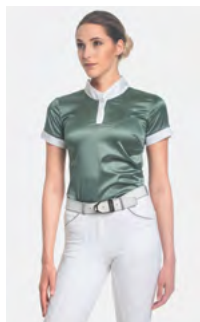
120-103031
UNIVERSE
 Show Shirt, short sleeve
 XS, S, M, L, XL
 white/black microstriped



120-103032
UNIVERSE
 Show Shirt, long sleeve
 XS, S, M, L, XL
 white/black microstriped



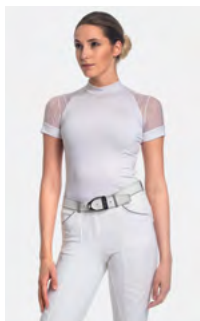
120-106131
ANGEL
 Show Shirt, short sleeve
 XS, S, M, L
 white



120-104131
DUSTY GREEN
 Show Shirt, short sleeve
 XS, S, M, L
 dusty green

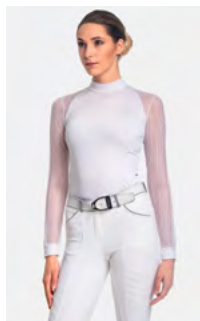


120-104132
DUSTY GREEN
 Show Shirt, long sleeve
 XS, S, M, L
 dusty green



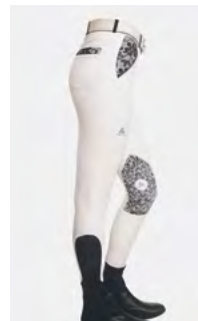
120-105131
WHITE CONTESSA

Show Shirt, short sleeve
XS, S, M, L, XL, XXL
white



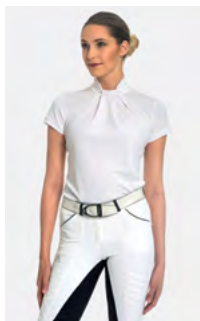
120-105132
WHITE CONTESSA

Show Shirt, long sleeve
XS, S, M, L, XL, XXL
white



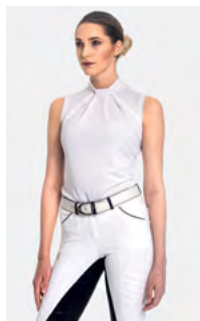
120-110140
ROYAL SPORT LACE 'J'

Knee Patch Silicon
Breeches
34, 36, 38, 40, 42
white with black lace



120-107131
FESTIVE

Show Shirt, short sleeve
XS, S, M, L, XL
white



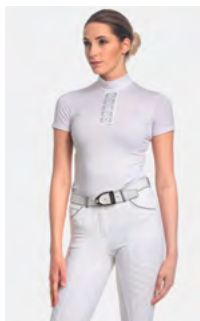
120-107133
FESTIVE

Show Shirt, sleeveless
XS, S, M, L, XL
white



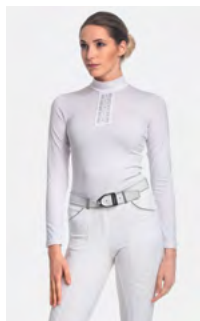
120-110141
ROYAL RIDE 'J'

Knee Patch Silicon
Breeches
34, 36, 38, 40, 42
beige, black



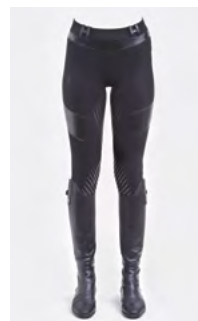
120-108131
SILVER POP

Show Shirt, short sleeve
XS, S, M, L, XL
white



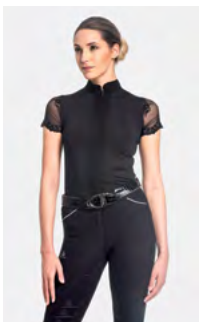
120-108132
SILVER POP

Show Shirt, long sleeve
XS, S, M, L, XL
white



220-103040
ROYAL PLEASURE II.

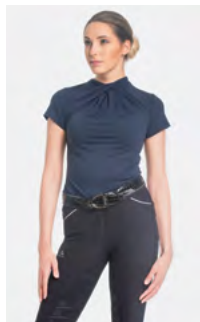
Leggings
34, 36, 38, 40
black, navy blue



220-104151

ANGEL

Top, short sleeve
XS, S, M, L
black



220-105051

CASUAL CHIC

Top, short sleeve
XS, S, M, L, XL
navy blue



220-105052

CASUAL CHIC

Top, long sleeve
XS, S, M, L, XL
navy blue



220-106151

ROSE GOLD

T-Shirt
S, M, L, XL
black



220-106030

ROSE GOLD

Hoodie
XS/S, M/L, XL/XXL
navy blue



220-102110

RAINY

Raincoat
S/M, L/XL
black



220-101110

DUSTY GREEN JAX

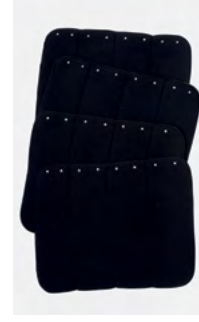
Faux-Leather Coat
S, M, L
dusty green



220-201110

JAX MEN

Faux-Leather Coat
S/M, L/XL
navy blue/grey



420-002150

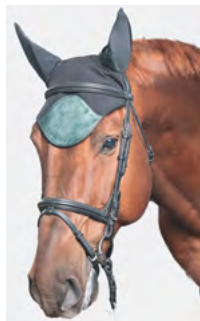
CRYSTAL

Bandage Pads | 4 pcs/set
full
black, white



420-001121
DUSTY GREEN

Horse Ear Bonnets
full J, cob J
dusty green/black



420-001121
DUSTY GREEN

Horse Ear Bonnets
full DR, cob DR
dusty green/black



120-107131
FESTIVE KIDS

Short Sleeve
8/9y, 10/11y



420-001122
DUSTY GREEN

Bandages | 4 pcs/set
full
dusty green/black



420-001111
DUSTY GREEN

Saddle Pad
full DR, full J
dusty green/black



120-107133
FESTIVE KIDS

Sleeveless
8/9y, 10/11y



220-106151
ROSE GOLD KIDS

T-Shirt
black
6/7y, 8/9y, 10/11y



220-102110
RAINY KIDS

black
6/7y, 9/11y

**For sizing please refer to our size charts on www.cavalliera.com*



CAVALLIERA

CONTACT:

CAVALLIERA INTERNATIONAL LTD.

www.cavalliera.com | +3670 531 9009 | info@cavalliera.com

www.facebook.com/cavalliera 

www.instagram.com/cavalliera_international 

© ALL RIGHTS RESERVED. 2020 CAVALLIERA INTERNATIONAL LTD.