



CAVALLIERA

CAVALLIERA
SEASONAL

FW19/20

Made in EU



CAVALLIERA CLASSICS

Continuously available stock for 2 years.



CAVALLIERA SEASONAL

Additional, new products for Spring/Summer and Fall/Winter seasons. (limited stock)

Customer Reward Program

Our customers are entitled to enjoy a variety of additional benefits according to their total spendings. Silver, Gold or Diamond customers receive more and more advantages e.g.: better payment conditions, professional marketing support, introducing the newest collections before appearing on the market.

Learn more at

cavalliera.com/customer-reward-program

Customer Service

“We jump the highest bar - in serving our customers.”

Industry leading online platform for retailers paired with a highly personal and tailored attention to your needs.

Learn more at cavalliera.com/customer-service

Use our marketing materials designed for retailers: cavalliera.com/retailer-support

Worldwide presence
in 40+ countries



Our mission

Cavalliera is a global leader in the design of stylish competition grade equestrian apparel, offering the best design/quality/price ratio riding wear on the market.

Cavalliera is permanently developing the show apparels with its revolutionary innovations as 'Second Skin' and 'Double Front Panel' show

jackets, lace show shirts, and is defining the future of equestrian style with its constantly evolving fine detailed clothes.

Cavalliera revolutionises the online customer service with its retailer account system. The Team supports its partners with a cutting-edge automation and a truly personal attention.



SHOW JUMPERS,
DRESSAGE, HUNTER,
HOBBY AND WESTERN RIDERS



SHOW JACKETS, SHOW SHIRTS,
BREECHES, RIDING TOPS, COATS,
VESTS, HORSE EQUIPMENT

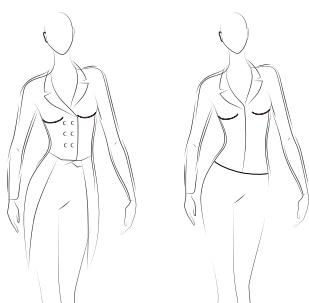


FOR WOMEN,
MEN AND KIDS

Cavalliera International Ltd. Since 2008

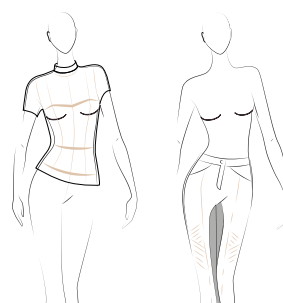
Headquarter: Budapest, Hungary | +36 70 531 9009 | info@cavalliera.com | www.cavalliera.com

Show Apparel



SHOW JACKETS REGULAR (WOMEN)

SIZE	CHEST		WAIST		HIPS		ARM length		JACKET length	
	CM	INCH	CM	INCH	CM	INCH	CM	INCH	CM	INCH
XS	86	34	72	28	82	32	60.5	24	61	24
S	92	32	76	30	90	35	61.5	24	61	24
M	96	38	80	31.5	92	36	63	25	62	24
L	100	39	90	35	96	38	65	26	65	26
XL	106	42	98	39	106	42	66	26	65	26



TAILCOATS 'SECOND SKIN'

SIZE	Chest		Waist		Arm length		Tailcoat length (back)	
	CM	INCH	CM	INCH	CM	INCH	CM	INCH
10-11y	68	27.0	62	24.5	51	20	84	33
12-13y	70	27.5	64	25	53	21	86	34
XXS	80	31.5	70	27.5	61	24	95	37.5
XS	82	32.5	72	28.5	63	25	96	38
S	84	33.0	74	29	65	25.5	97	38
M	86	34.0	76	30	65	25.5	97	38
L	88	34.5	78	30.5	67	26.5	98	38.5

SHOW JACKETS 'SECOND SKIN' (WOMEN)

SIZE	CHEST		WAIST		HIPS		ARM LENGTH		JACKET LENGTH (BACK)	
	CM	INCH	CM	INCH	CM	INCH	CM	INCH	CM	INCH
XS	68	26.5	60	23.5	78	30.5	60	23.5	58	22.5
S	74	29	68	26.5	80	31	60	23.5	58	22.5
M	80	29	74	29	92	36	62	24	59	23
L	88	34.5	76	29.5	96	37.5	65	25	60	23.5

SHOW SHIRTS (WOMEN & TEENS)

SIZE	CHEST		WAIST		HIPS		ARM LENGTH (LONG SLEEVE)		SHIRTS LENGTH (BACK)	
	CM	INCH	CM	INCH	CM	INCH	CM	INCH	CM	INCH
XS	74	29	70	28	82	32	56.5	22	55	22
S	76	30	72	28	84	33	58	23	56	22
M	78	31	76	30	88	35	59	23	57	22
L	82	32	78	31	88	35	59	23	58	23
XL	92	36	86	34	102	40	62	24	59	23
XXL	102	40	98	39	114	45	62	24	65	26

CLASS

519-101110 | Riding Show Jacket



STRETCHY
COMFORT



SEASONAL
THERMAL
TREATMENT



EASY CARE



PROTECTION



A timeless silhouette with classic tailoring. Featuring black fabric with a simple, elegant shape, snaps detailing and a brown collar. This jacket is giving you a sports luxe feeling and athletic functionality. This sophisticated show jacket provides a show stopping style that will have all eyes on you. Made of premium softshell material that allows this show coat to move with your body, it allows full freedom of comfortable movement thanks to its figure flattering cut and elasticity. Dress for success! You will have the looks of a champion in this jacket, go and win the competition.

Machine washable and easy to care for.



Fabric: Softshell Premium:
41% PA 35% PES 15% EA 9% PU

Size: XS, S, M, L, XL

Colour:  black/cappuccino



CHIC - SECOND SKIN TECHNOLOGY

519-102110 | Riding Show Jacket


LIGHTWEIGHT


PROTECTION


MAXY
STRETCH


SILKY SOFT



The zippers on the front create a smooth fit and outstanding look for this feminine jacket. The special wrapped shape on the back adds a unique, modern flair to bring personality to a perfect show wear. The industry-leading stretch fabric and Second Skin Technology provide an unrestricted movement in the saddle. Feminine and athletic look for any show ring. You will have the looks of a champion in this jacket, go and win the competition!

Machine washable and easy to care for.



Fabric: Softshell Pique: 96% PES 4% SP

Size: XS, S, M, L

Colour:  black
 navy blue



ROSE GOLD - SECOND SKIN TECHNOLOGY

519-103120 | Dressage TailCoat



LIGHTWEIGHT



PROTECTION



SILKY SOFT



MAXY STRETCH

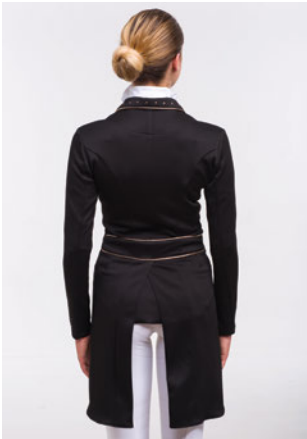


ROSE GOLD



Tailcoat in discreet rose gold style - it is easy to instantly fall in love with it, especially for riders, who prefer modern fabrics that create a flattering fit. The Second Skin Technology tailcoats are designed with a super slim and flexible fit, with a curved waist for a more flattering look. Made of technical softshell pique fabric that also offers great freedom to move and ride while still being light and undeniably stylish. Features rose gold piping around and fine rose gold details for a creative and modern look.

Enter the ring with confidence and style with this flattering new show tailcoat and add more rose gold accessories to your or your horse's look!



Fabric: Softshell Pique: 96% PES 4% SP

Size: 10/11Y, 12/13Y, XXS, XS, S, M, L

Colour:  black
 navy blue

ROSE GOLD

519-104131 | Short Sleeve Riding Show Shirt



A functional solution for rose gold lovers! A fusion of eye-catching rose gold details and breathable, performance fabrics that create a lightweight and flattering show shirt. Utilizing our super stretchy fabric, this competition shirt is designed to be high-performing. This top has a hidden buttoned front closure with rose gold inlay and it is elegantly finished with a subtle contrasting rose gold stitching around. A great choice with classic lines and thoughtful details.

Available in short and long sleeve.

Fabric: CoolP: 74% PES 22% NY 4% SP

Size: XS, S, M, L, XL


Colour: ☐ white


519-104132 | Long Sleeve Riding Show Shirt





WHITE CONTESSA

519-105131 | Short Sleeve Riding Show Shirt


SILKY SOFT


LIGHTWEIGHT


NO TRACES
OF PERSPIRATION


STRETCHY
COMFORT



Made of a high performance lightwear technical fabric combined with sophisticated raglan-style striped lace sleeves. Extremely feminine but comfortable, the modern update of show shirts, and a fusion of eye-catching design and functionality.

It features a timeless design and athletic functionality which appeals to riders of any discipline.

Wear this extra feminine equestrian show shirt and win the show and his heart at the same time!

Machine washable (light program).

Available in short and long sleeve.

Fabric:	CoolP: 74% PES 22% NY 4% SP
	Lace: 100% PES
Size:	XS, S, M, L, XL, XXL
Colour:	<input type="radio"/> white


519-105132 | Long Sleeve Riding Show Shirt








CHIC

519-106131 | Short Sleeve Riding Show Shirt


SILKY SOFT


LIGHTWEIGHT


NO TRACES
OF PERSPIRATION


STRETCHY
COMFORT



This performance show shirt is a stand alone style with its unique cross front. Featuring an exclusive light and silk touch two-way stretch technical fabric, this show shirt is an elegant addition to your wardrobe that doesn't compromise function. The CoolP fabric's special airflow technology provides the best for athletes thanks to the uniquely designed light polyamide threads. A show shirt option that unites elegance and technology.

Machine washable (light program).

Available in short and long sleeve.


519-106132 | Long Sleeve Riding Show Shirt




Fabric:	CoolP: 87% PES 13% EA
Size:	XS, S, M, L, XL
Colour:	<input type="radio"/> white

MOON


519-107131 | Short Sleeve Riding Show Shirt




NO WRINKLES



LIGHTWEIGHT



NO TRACES
OF PERSPIRATION



STRETCHY
COMFORT



Classic never goes out of style. Stay timeless with this professional show shirt! Featuring a unique pleated front and solid crystal decoration. This show top is a unique competition style, made of a high quality technical fabric that was developed for active wear, this shirt provides all day comfort and style. This show shirt is highly functional both in the show ring and out. Without compromising style, it will feel sleek and professional as you ride.


Honor yourself and ride in style with this highly elegant equestrian competition shirt!

Machine washable (light program). It is recommended to use color catcher for first washing.

Available in short and long sleeve.

519-107132 | Long Sleeve Riding Show Shirt



Fabric:	CoolP: 74% PES 22% NY 4% SP
Size:	XS, S, M, L, XL
Colour:	 navy blue

BLACK JACK

519-108031 | Short Sleeve Riding Show Shirt



COTTON BASED



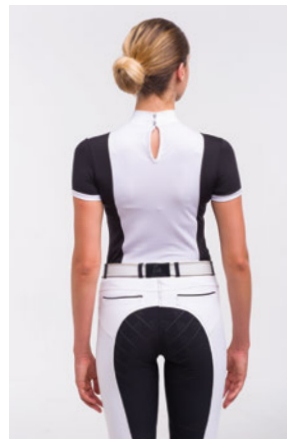
NATURAL
FEELING



BREATHABLE



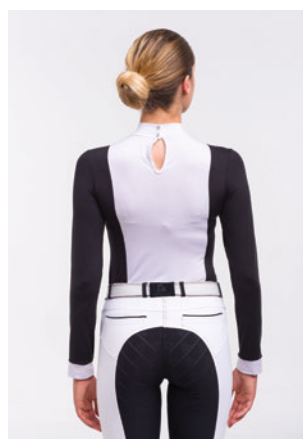
4-WAY
STRETCH



An inimitable design made for riders with style! Raise the standards when you ride in this cotton based top that is a great competition shirt that will perform whilst you're riding! Featuring cotton based fabric that will perform no matter how the weather is, providing comfort for all day. Contrast color panels for sporty and extravagant design in gorgeous combination of black and white. The chic design flatters the body whilst still allowing freedom of movement and natural comfort. Machine washable. It is recommended to use color catcher for first washing.

Available in short and long sleeve.

519-108032 | Long Sleeve Riding Show Shirt



Fabric: Stretch Cotton: 95% CO 5% SP

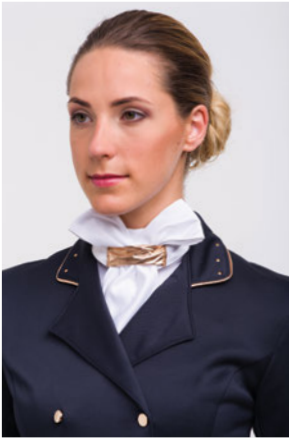
Size: XS, S, M, L, XL

Colour:  white/black

accessories

ROSE GOLD

519-109150 | Riding Stock Tie

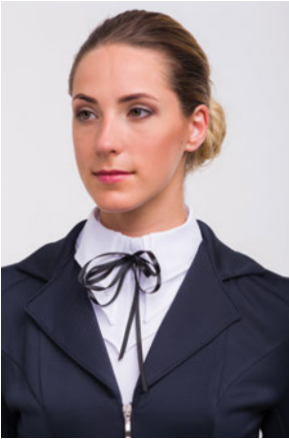


Fresh-look, pre-tied bling stock tie features rose gold details. This super stylish stock tie is made with a smooth microfiber woven matte fabric with a silky hand-feel but still a substantial enough body to look crisp and neat for dress attire.

Fabric:	Düsef: 100% PES
Size:	uni
Colour:	<input type="radio"/> white

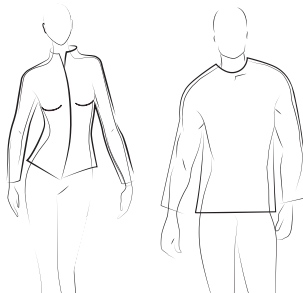
LADY

519-110150 | Riding Stock Tie



This extra elegant stock tie has a soft silk feel while made with 100% georgette. Perfect to personalize yourself when you have to dress up in competition wear. Sophisticated stock tie with a satin ribbon decoration. Look your best in the competition arena with this unique, beautifully crafted design plastron!

Casual



COATS & VESTS (WOMEN)

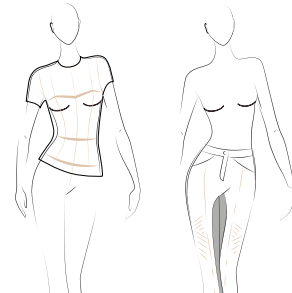
SIZE	CHEST		WAIST		HIPS		ARM length (jacket)		LENGTH (back)	
	CM	INCH	CM	INCH	CM	INCH	CM	INCH	CM	INCH
XS	90	35	80	31.5	88	34.5	58	23	58	23
S	91	36	84	33	90	35.5	61	24	59	23
M	92	36	86	34	94	37	62	24.5	62	24.4
L	99	39	90	35.5	100	39.5	63	25	63	25
XL	105	41	98	38.5	104	41	64	25	64	25

VESTS (MEN)

SIZE	CHEST		WAIST		HIPS		LENGTH (back)	
	CM	INCH	CM	INCH	CM	INCH	CM	INCH
S	108	42.5	108	42.5	108	42.5	70	27.5
M	112	44	112	44	112	44	72	28.5
L	116	45.5	116	45.5	116	45.5	74	29
XL	120	47	120	47	120	47	76	30

TOPS (WOMEN)

SIZE	CHEST		WAIST		HIPS		ARM LENGTH (long sleeve)		SHIRTS LENGTH (back)	
	CM	INCH	CM	INCH	CM	INCH	CM	INCH	CM	INCH
XS	74	29	70	28	82	32	56.5	22	55	22
S	76	30	72	28	84	33	58	23	56	22
M	78	31	76	30	88	35	59	23	57	22
L	82	32	78	31	88	35	59	23	58	23
XL	92	36	86	34	102	40	62	24	59	23



SWEATERS (WOMEN & GIRLS)

SIZE	CHEST		WAIST		HIPS		LENGTH (back)	
	CM	INCH	CM	INCH	CM	INCH	CM	INCH
6/8y	74	29	71	28	74	29	47	19
9/11y	76	30	73	29	80	32	49	19
XS	76	30	72	28	84	33	56	22
S	78	31	76	30	88	35	57	22
M	82	32	78	31	88	35	58	23
L	92	36	86	34	102	40	59	23
XL	102	40	98	39	114	45	65	26

SWEATERS (MEN)

SIZE	CHEST		WAIST		HIPS		LENGTH (back)	
	CM	INCH	CM	INCH	CM	INCH	CM	INCH
S	116	45	116	45	116	45	74	29
M	120	47	120	47	120	47	76	30
L	124	49	124	49	124	49	78	31
XL	130	51	130	51	130	51	82	32.0

LEGGINGS (WOMEN)

SIZE	Waist		Seat		Thigh		INSEAM		TOTAL RISE	
	CM	INCH	CM	INCH	CM	INCH	CM	INCH	CM	INCH
34	67	28	78	31	51	20	73	29	47	18.5
36	71	28	82	32	53	21	73	29	49	19
38	75	29.5	86	34	55	21.5	73	29	51	20
40	79	31	90	35	57	22.5	73	29	53	21

JAX

619-101110 | Riding Faux Leather Coat



STRETCHY COMFORT



EASY CARE



PROTECTION



NO WRINKLES



Elegant style and feminine lines give this jacket the perfect look for everyday training, wearing around the stable or around town in any climate. Made in the most luxurious faux-leather fabric, full zip panel outerwear with mesh technology in fabric for a better texture breathability that provides a dry environment for the rider. The easy care faux-leather fabric is super stretchy and soft, it gives maximal freedom of movement while you ride, while the zippered pockets will keep your belongings safe. Be the best version of you in this coat!

This is the 'must have' coat for every horse rider lady. Unique, feminine style in a durable and functional wear. This jacket is made for the hard working equestrian.



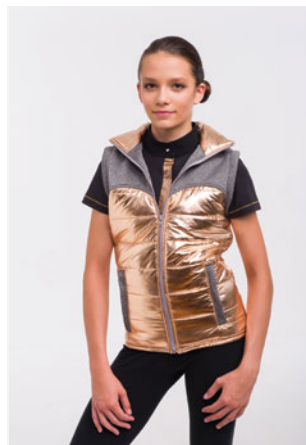
Fabric: Faux Leather: 40% PE 60% PU

Size: S, M, L

Colour:  navy blue


ROSE GOLD

619-102120 | Riding Vest Waterproof



Sparkling design and functional wear for rose gold fans. High collar, waterproof quilted puffer vest with zipper. This extraordinary looking equestrian vest is a perfect choice for everyday use thanks to its technical solutions that allow full freedom of comfortable movement. Multi layered, water resistant, windproof and breathable softshell fabric combined with quilted material provide full protection against varying weather conditions.

(Softshell is a water-resistant fabric which is resistant to rain up to 10000 mm H²O. Windproof. Breathable 3000 g/m²/24hrs. Seams are not waterproofed.)


Fabric:	Softshell & Quilted Puffered Water-Resistant: 100% PES
Size:	XS, S, M, L, XL
Colour:	 rose gold/grey melange

DON

619-201120 | Riding Vest Waterproof



High collar, waterproof quilted puffer vest with zippered pockets at hips, front zip closure. Made with a combination of waterproof padded fabric and technical softshell fabric (that is waterproof up to 10000 mm H²O, windproof and breathable 3000 g/m²/ 24hrs). The classic navy blue/grey design provides an athletic and elegant look while in the saddle and around the stable. Easy to take care and clean.

Fabric:	Fabric: Softshell & Quilted Puffered Water-Resistant: 100% PES
Size:	S, M, L, XL
Colour:	 navy blue/grey melange





MAJESTY LONG


619-103110 | Riding Coat with Waterproof Inserts



A perfect solution for all weather riders. This cold weather puffer coat is made with a combination of a waterproof quilted fabric and a cosy knitted fleece fabric. The different panels provide protection and ventilation where those are needed. The lightweight construction keeps you warm and dry while in the saddle. Hidden gusset snaps open to reveal a protective skirt that covers you and your saddle against inclement weather. When the skirt is not in use, it snaps elegantly into place. Featuring waterproof hood. Comfortable and easy to ride and work in, this jacket is a must-have for the active equestrian. The jacket is designed to move gently while you ride, while the zippered pockets will keep your belongings safe.

(The water-resistant fabric is resistant to heavy rain, but the knitted parts are moderately waterproof to preserve body ventilation. Seams are not waterproofed. This long coat is definitely held in the rain, but it tends to get soggy after sustained period in heavier rain.)



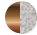
Fabric:	Knitted Fleece & Quilted Puffered Water-Resistant: 100% PES
Size:	XS, S, M, L, XL
Colour:	 navy blue/navy blue melange

ROSE GOLD
619-104130 | Riding Sweater

- 
LIGHTWEIGHT
- 
NO WRINKLES
- 
CLIMATE CONTROL
- 
QUICK DRY
- 
ROSE GOLD




Warm sweater, made of the highest quality fleece with impressive quilted details. The sleeves have thumb holes in cuffs that protect the riders' hands on cold days. The large and cosy snood provides protection even on extremely cold days without having to wear a scarf, providing a safer solution for the athlete. The sweatshirt is decorated with waterproof inserts on the sleeves, which provide protection against rain where it is most needed.

- Fabric:** Micro Polar: 100% PES Quilted
Puffered Water-Resistant: 100% PES
- Size:** 6/8Y, 9/11Y, XS, S, M, L, XL
- Colour:**  rose gold/grey melange

DON
619-202130 | Riding Sweater



- Fabric:** Micro Polar: 100% PES Quilted
Puffered Water-Resistant: 100% PES
- Size:** S, M, L, XL
- Colour:**  navy blue/grey melange



ROSE GOLD

619-105151 | Short Sleeve Riding Top



LIGHTWEIGHT



NO WRINKLES



STRETCHY
COMFORT



NO TRACES OF
PERSPIRATION



ROSE GOLD

This rose gold detailed top made of fabric which is elastic in all directions, breathable and moisture wicking. The slim cut perfectly fits the body and ensures good wearing comfort. Utilizing our technical fabric, this shirt is designed for active wear, but it is still elegant. The top has a hidden buttoned front closure with rose gold inlay and it is elegantly finished with a subtle contrasting rose gold stitching around. A perfect choice for you as a rider, or simply as a horse lover.

Available in short and long sleeve.

619-105152 | Long Sleeve Riding Top



Fabric: CoolP: 74% PES 22% NY 4% SP

Size: XS, S, M, L, XL

Colour:  black



ROYAL PLEASURE II.
619-106040 | Riding Leggings



NO WRINKLES



4-WAY STRETCH



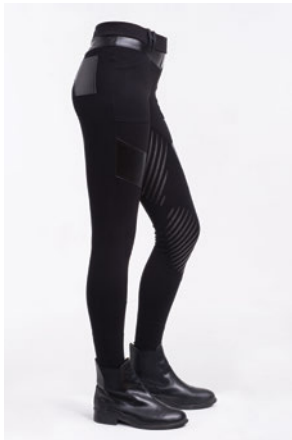
SEASONAL
THERMAL
TREATMENT



COTTON
BASED



BREATHABLE



This cotton based ultimate full grip leggings are fully functional, ultra-comfortable and unquestionably stylish. Designed for the perfect fit. 4-way stretch fabric gives the rider the ultimate riding experience and provides a perfect fit all shapes and heights. This leggings is designed for everyday needs in mind combining elegant styling.

The functional pockets are comfortably fit for phones or small belongings. The silicone print on the seat provides a secure grip in the saddle and more consistent leg position without the added bulk of a full-seat layer. Clean lines, natural fabric, interesting details: faux leather inserts, special belt loops make these leggings outstanding and super comfortable wear!

Fabric: Cotton Based Heavy Stretch Punto
Fabric: 68% VI 27% PA 5% SP

Size: 34, 36, 38, 40

Colour:  black
 navy blue



ROSE GOLD

719-001111 | Horse Saddle Pad



PROTECTION



EASY CARE



SILKY SOFT



ROSE GOLD

It's a stylish and functional solution for horses, made from premium softshell material and cotton bottom layer for the maximal comfort of your horse. It features eye-catching rose gold panels and piping what give this saddle pad a unique look.

Fabric:	Softshell Premium: 41% PA 35% PES 15% EA 9% PU, Cotton: 100% CO
Size:	fullSJ, fullDR
Colour:	<div> <div></div> black/rose gold </div> <div> <div></div> navy blue/rose gold </div> <div> <div></div> white/rose gold </div>

ROSE GOLD

719-001121 | Horse Ear Bonnets



Make your outlook complete while protecting your horse's ears against flies and insects! Short cut fly veil for horses, made from a combination of technical fabrics and CoolPass technology, designed with rose gold details. Further technical characteristic: The elastic microfiber threads provide oxygen-flow management for your horse's ears.

Fabric:	Softshell Premium: 41% PA 35% PES 15% EA 9% PU, CoolPass Mesh: 100% PES
Size:	cob,full
Colour:	<div> <div></div> black/rose gold </div> <div> <div></div> navy blue/rose gold </div>

CRYSTAL

719-002150 | Horse Bandage Pads



Leg wraps designed with rhinestones, which remain visible when worn, for a unique appearance. Super soft lined pillow wraps, channel quilted and polyfill padded to avoid marking the leg.

Produced with technical mesh covering for optimal oxygen flow. Superior fabrics for moisture wicking and temperature control. Set of 4.

Fabric:	Mesh: 100% PES Fleece: 100% PES
Size:	full (35 x 40 cm)
Colour:	<div> <div></div> black </div> <div> <div></div> white </div>

FABRICS FEATURES



TECHNICAL FABRICS | Developed specifically for active wear.



SEASONAL THERMAL TREATMENT:
the fabric keeps your body warm in the winter and cools in the summertime.



DRY BODY:
the micro-fine yarns allow moisture to escape from the body.



NO WRINKLES:
durable, wrinkle-resistant fabric.



PROTECTION:
moderately wind, water and UV resistant.



100% BREATHABLE:
the microfiber thread provides moisture-oxygen management.



SUMMER WEAR:
perfect for the hottest days with our CoolP microfiber, it will cool you down as well as protect you from solar rays.



EASY CARE:
light weight softshell fabric that is easy to care for.



DRY CLOTHING:
the micro-fine yarns create a capillary action to channel sweat or water away.



MAXI-STRETCH:
to follow body movements to the maximum extent.



STRETCHY COMFORT:
maximal freedom to move with your horse.



NO TRACES OF PERSPIRATION:
Water droplets are transported immediately to the air by microfiber, no traces on the surface.



CLIMATE CONTROL:
keeps your body in the ideal condition in all weather.



LIGHTWEIGHT:
breathable, made with a moisture management fabric.



SILKY SOFT:
Silk Touch 4-way stretch fabric.



COTTON BASED FABRICS



COTTON BASED:
this material has good durability and utility traits.



BREATHABLE:
in humid atmosphere it can absorb 27% of water without getting damp. It has low thermal conductivity, therefore it is an ideal material for summer clothes, it prevents you from heat.



4-WAY STRETCH:
has very high elasticity characteristics. This fabric can be stretched into four directions. It is best used in clothing where you need an elastic waist and free range of motion.



NATURAL FEELING:
hypoallergenic, feels great to touch, suits perfectly for people with skin hypersensitivity.

TERMS AND CONDITIONS

ORDERING PROCESS

CAVALLIERA ONLINE RETAILER ACCOUNT (CORA) SYSTEM: Join Cavalliera official Online Retailer sales management system on www.cavalliera.com and manage your order by yourself!

CUSTOMER SERVICE: The team of Cavalliera supports its partners with a truly personal attention.

Please contact our **CUSTOMER SERVICE** or apply for retailer access to CORA:

sales@cavalliera.com

+36 70 531 9009

PRICES

The prices of the Goods are based on the prices quoted in **CORA** which are available on www.cavalliera.com through retailer account. All stated prices are exclusive of any taxes, fees, duties, and levies.

INCOTERMS: EX WORKS

READ MORE ABOUT THE TERMS AND CONDITIONS HERE:

cavalliera.com/retailer-terms



CAVALLIERA

CAVALLIERA

www.facebook.com/cavalliera

www.instagram.com/cavalliera_international

